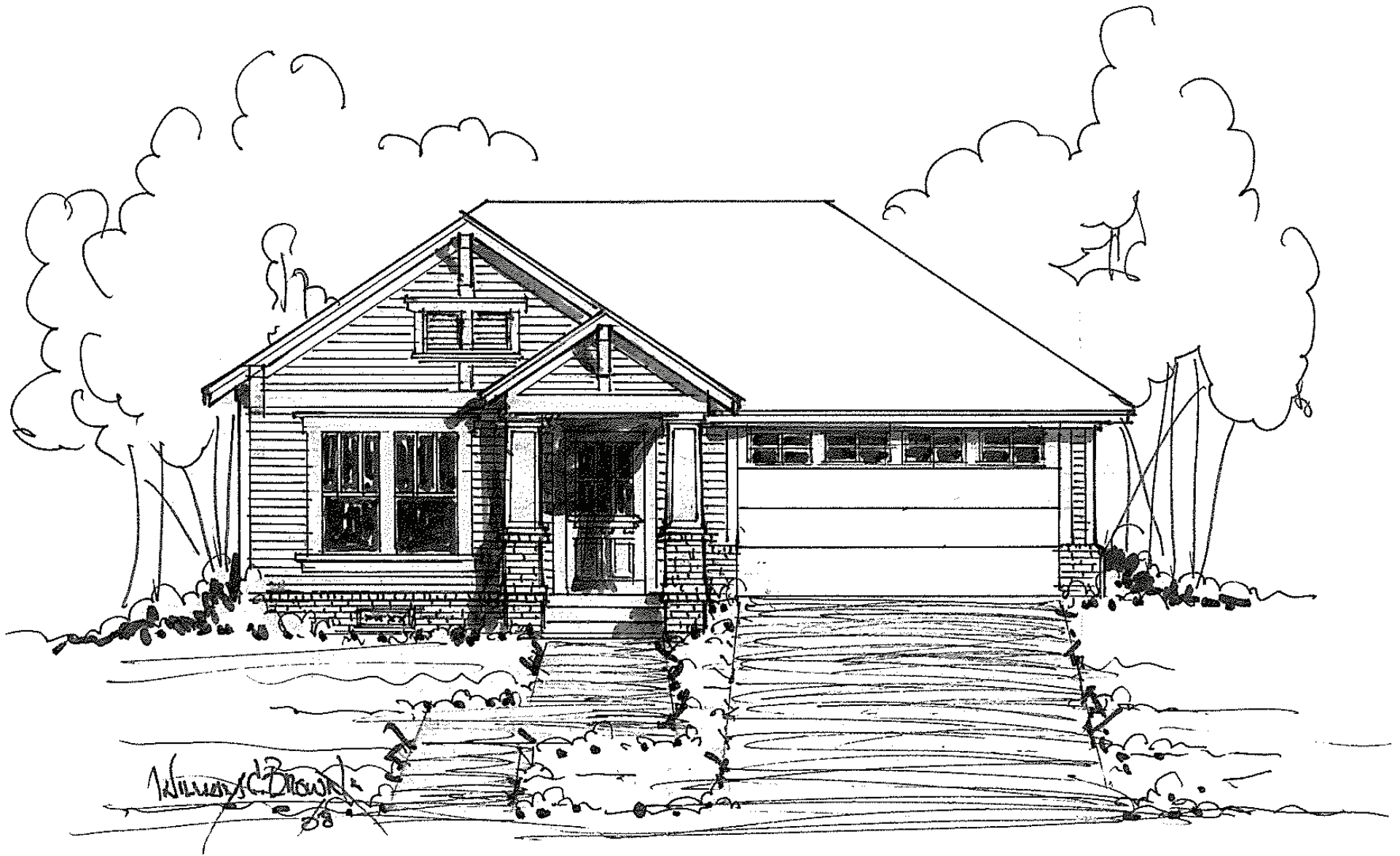


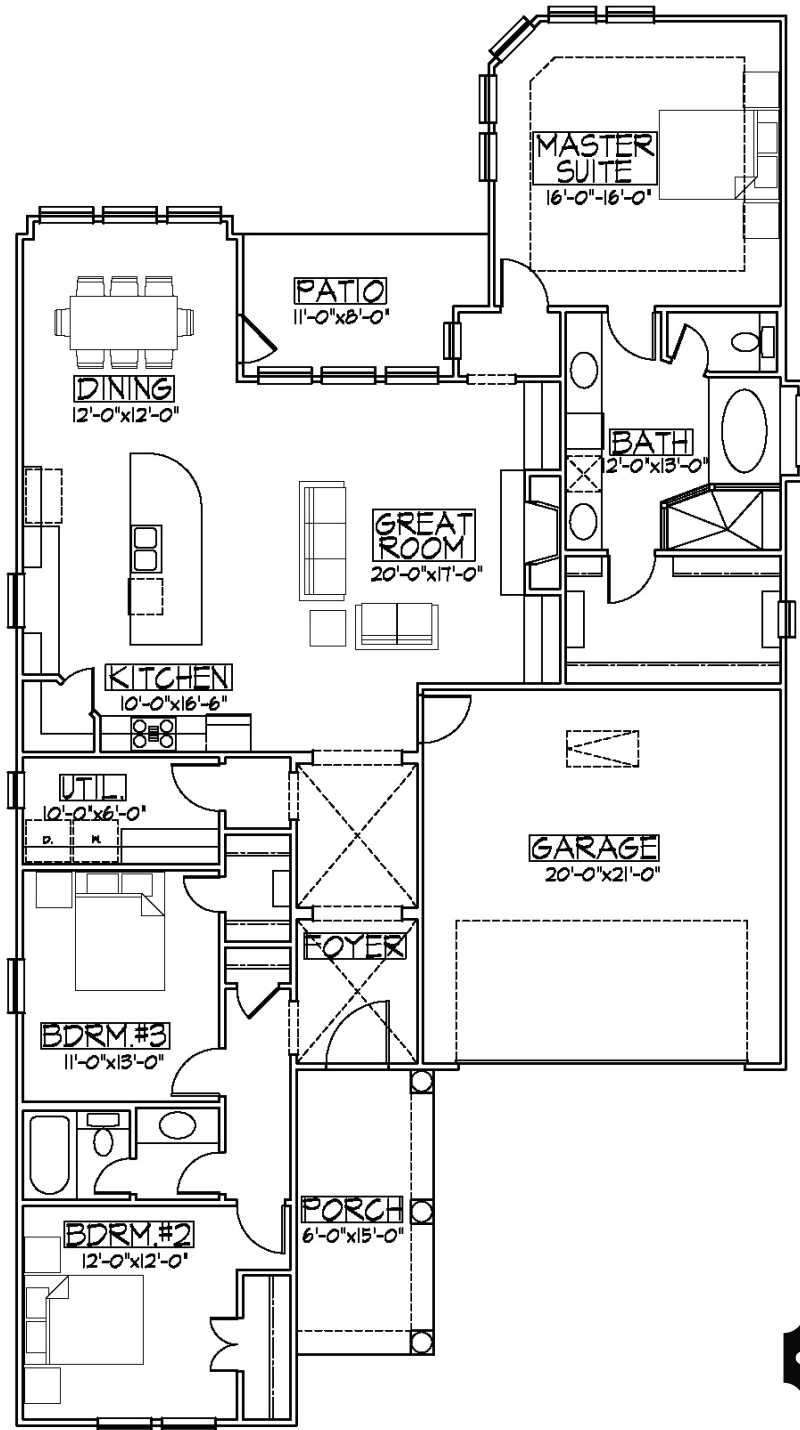


Cottage



Cottage Plan A

PRICES, SQUARE FOOTAGE, PLANS, FEATURES, AND AVAILABILITY MAY CHANGE WITHOUT NOTICE OR OBLIGATION. PHOTOS AND RENDERINGS ARE ARTISTS' DEPICTIONS ONLY AND ARE NOT NECESSARILY TO SCALE OR REPRESENTATIVE OF THE FINAL/FINISHED PRODUCT. NOBLE VILLAGE CLASSIC HOMES LLC 8-29-08



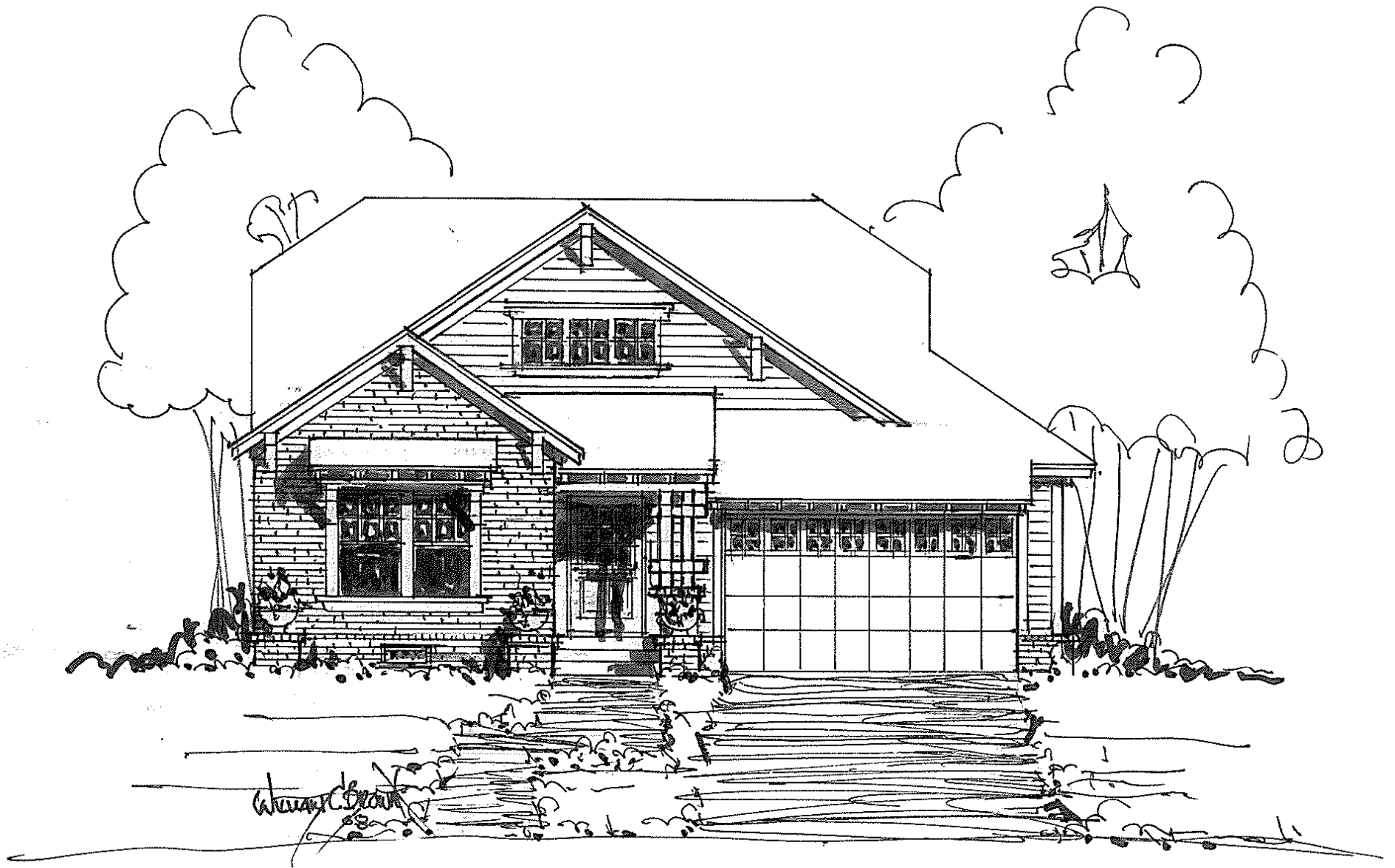
COTTAGE PLAN A

One Story 2014 sq. ft.

Total Living Area 2014 sq. ft.

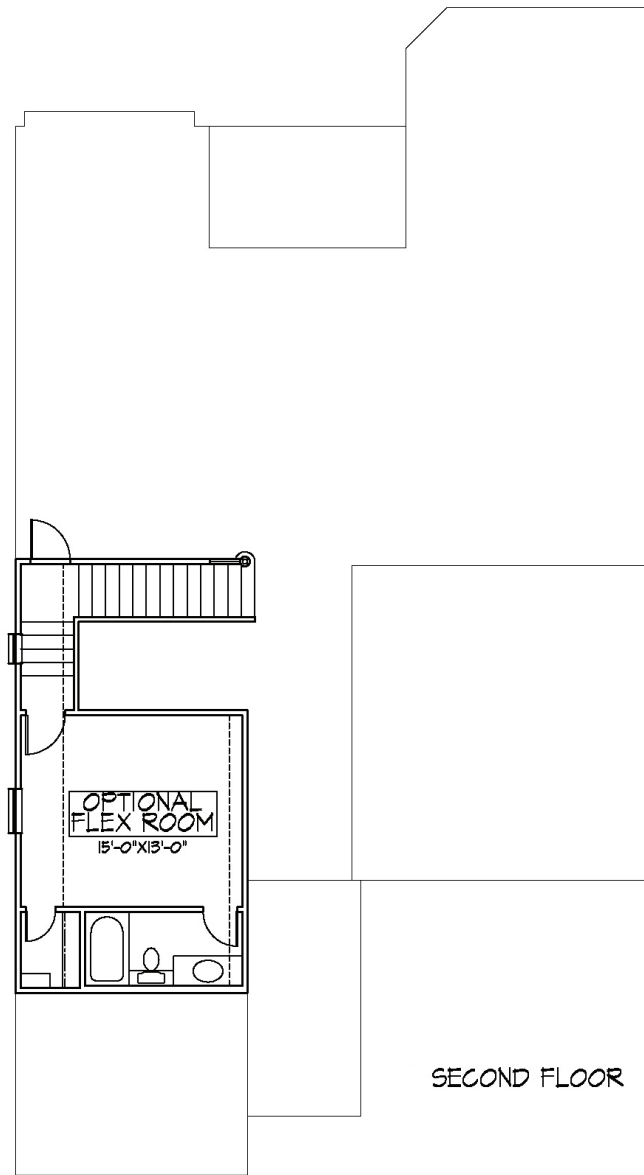
◦ *Noble Village Classic Homes* ◦

Quality Homes, Timeless Design

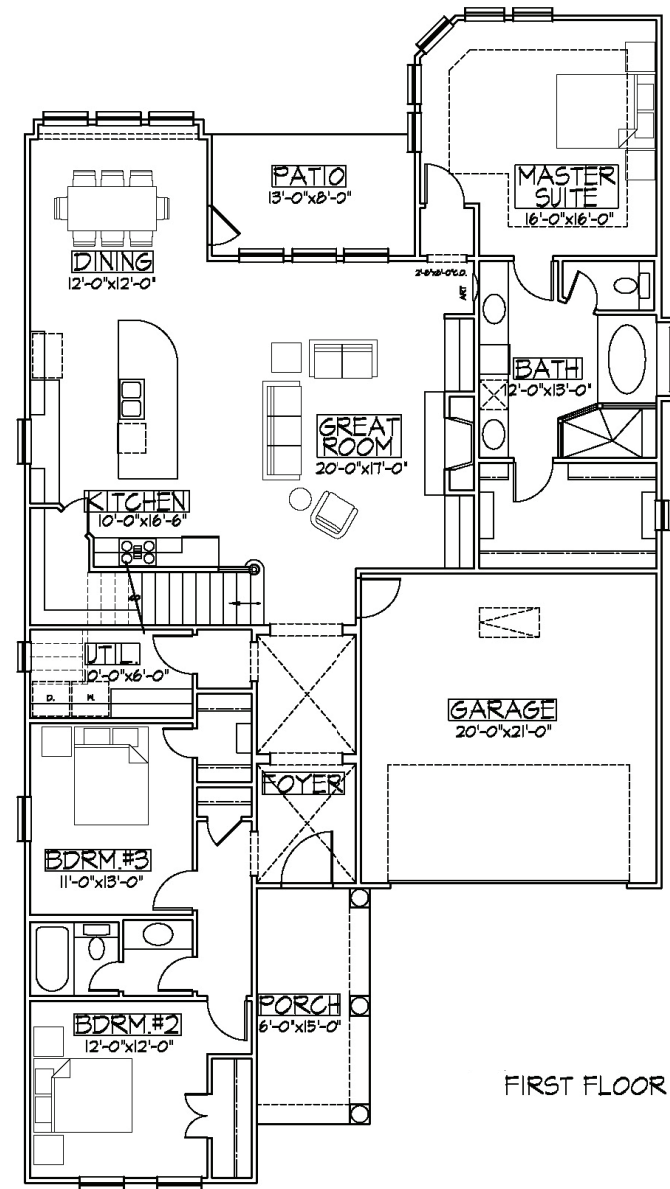


Cottage Plan B

PRICES, SQUARE FOOTAGE, PLANS, FEATURES, AND AVAILABILITY MAY CHANGE WITHOUT NOTICE OR OBLIGATION. PHOTOS AND RENDERINGS ARE ARTISTS' DEPICTIONS ONLY AND ARE NOT NECESSARILY TO SCALE OR REPRESENTATIVE OF THE FINAL/FINISHED PRODUCT. NOBLE VILLAGE CLASSIC HOMES LLC 8-29-08



SECOND FLOOR



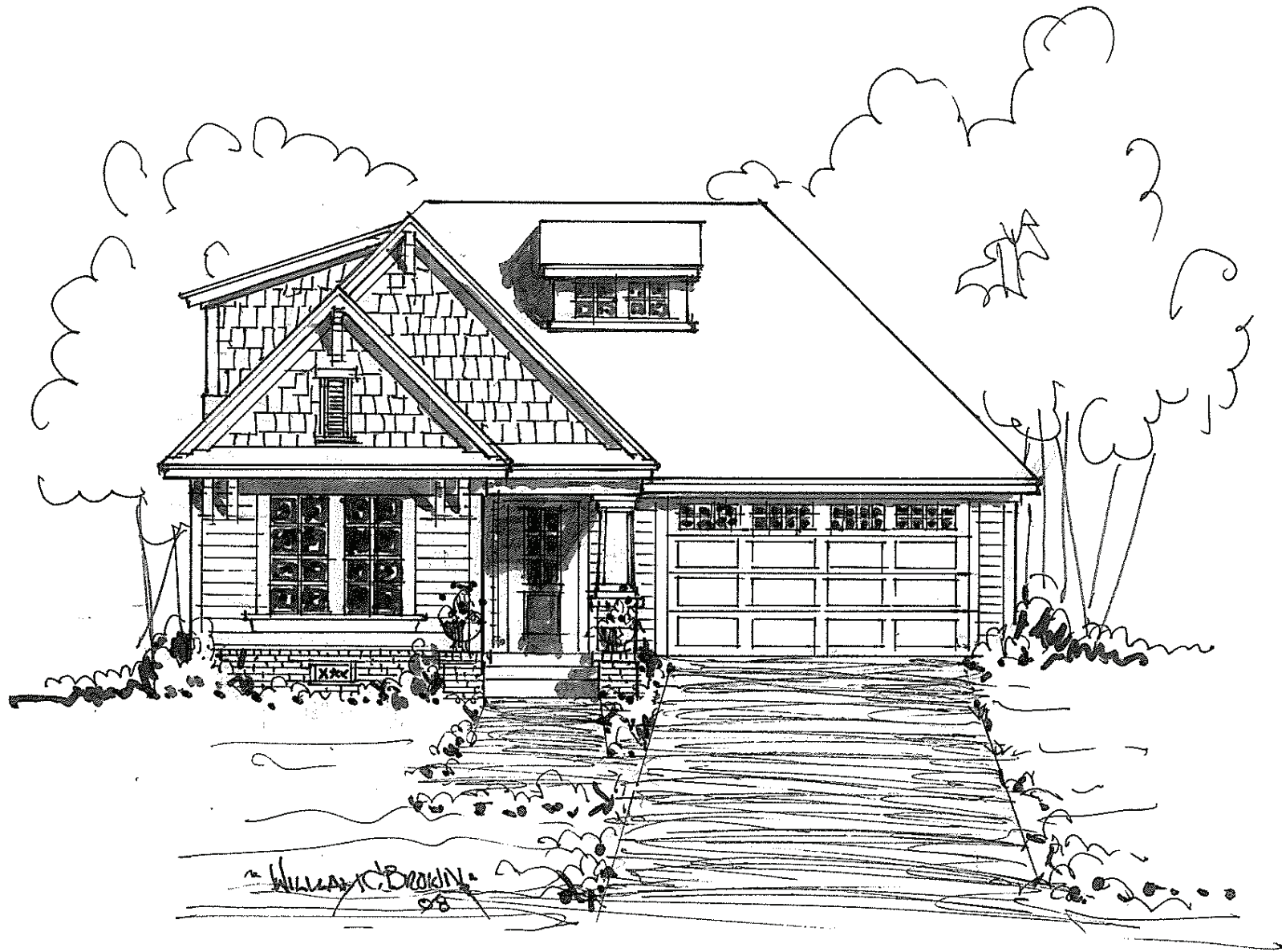
FIRST FLOOR

COTTAGE PLAN B

1st Floor 2113 sq. ft.
 2nd Floor 314 sq. ft.
 Total Living Area 2427 sq. ft.

• *Noble Village Classic Homes* •

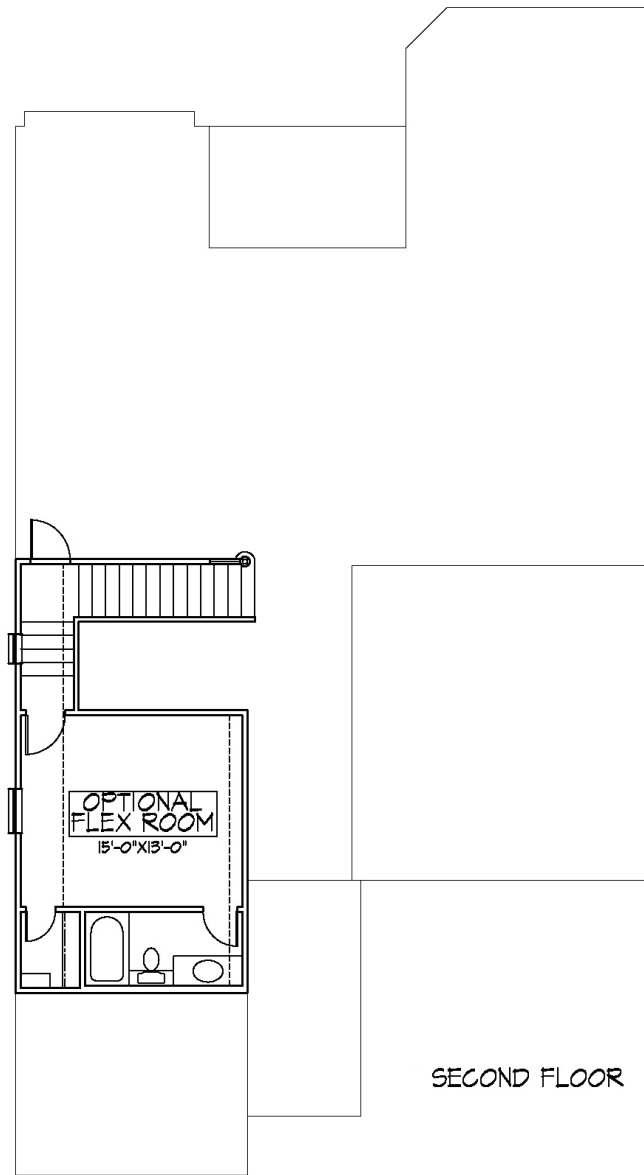
Quality Homes, Timeless Design



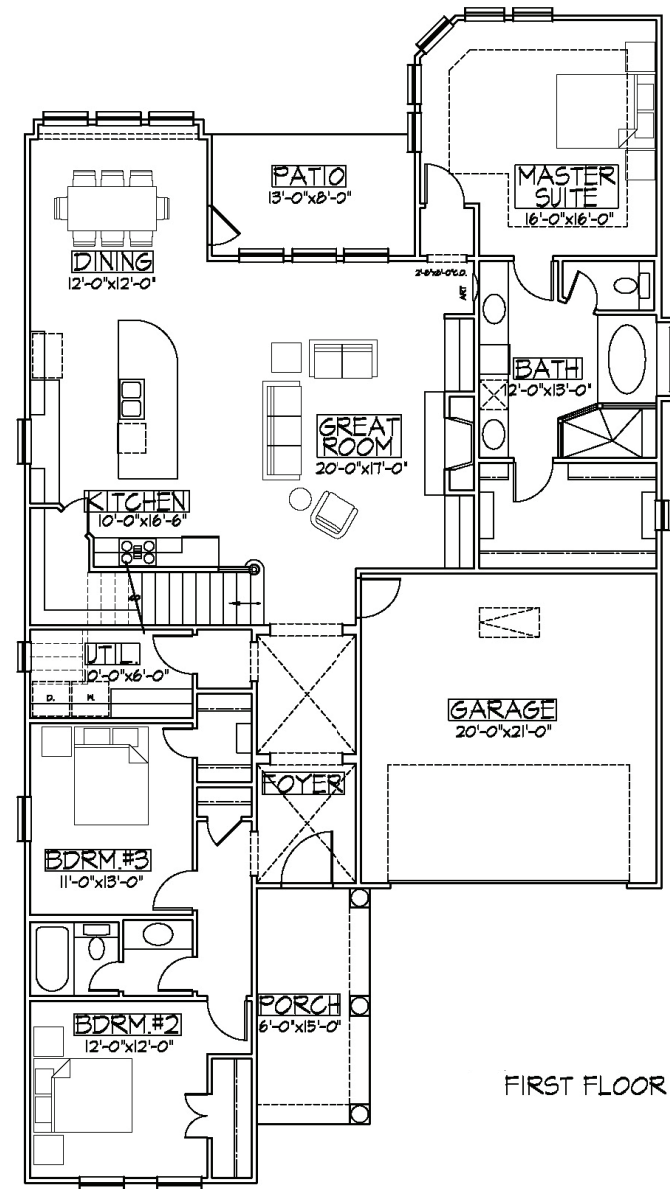
Cottage Plan B

(optional)

PRICES, SQUARE FOOTAGE, PLANS, FEATURES, AND AVAILABILITY MAY CHANGE WITHOUT NOTICE OR OBLIGATION. PHOTOS AND RENDERINGS ARE ARTISTS' DEPICTIONS ONLY AND ARE NOT NECESSARILY TO SCALE OR REPRESENTATIVE OF THE FINAL/FINISHED PRODUCT. NOBLE VILLAGE CLASSIC HOMES LLC 8-29-08



SECOND FLOOR



FIRST FLOOR

COTTAGE PLAN B
(OPTIONAL)

1st Floor *2113 sq. ft.*
2nd Floor *314 sq. ft.*

Total Living Area *2427 sq. ft.*

• *Noble Village Classic Homes* •

Quality Homes, Timeless Design