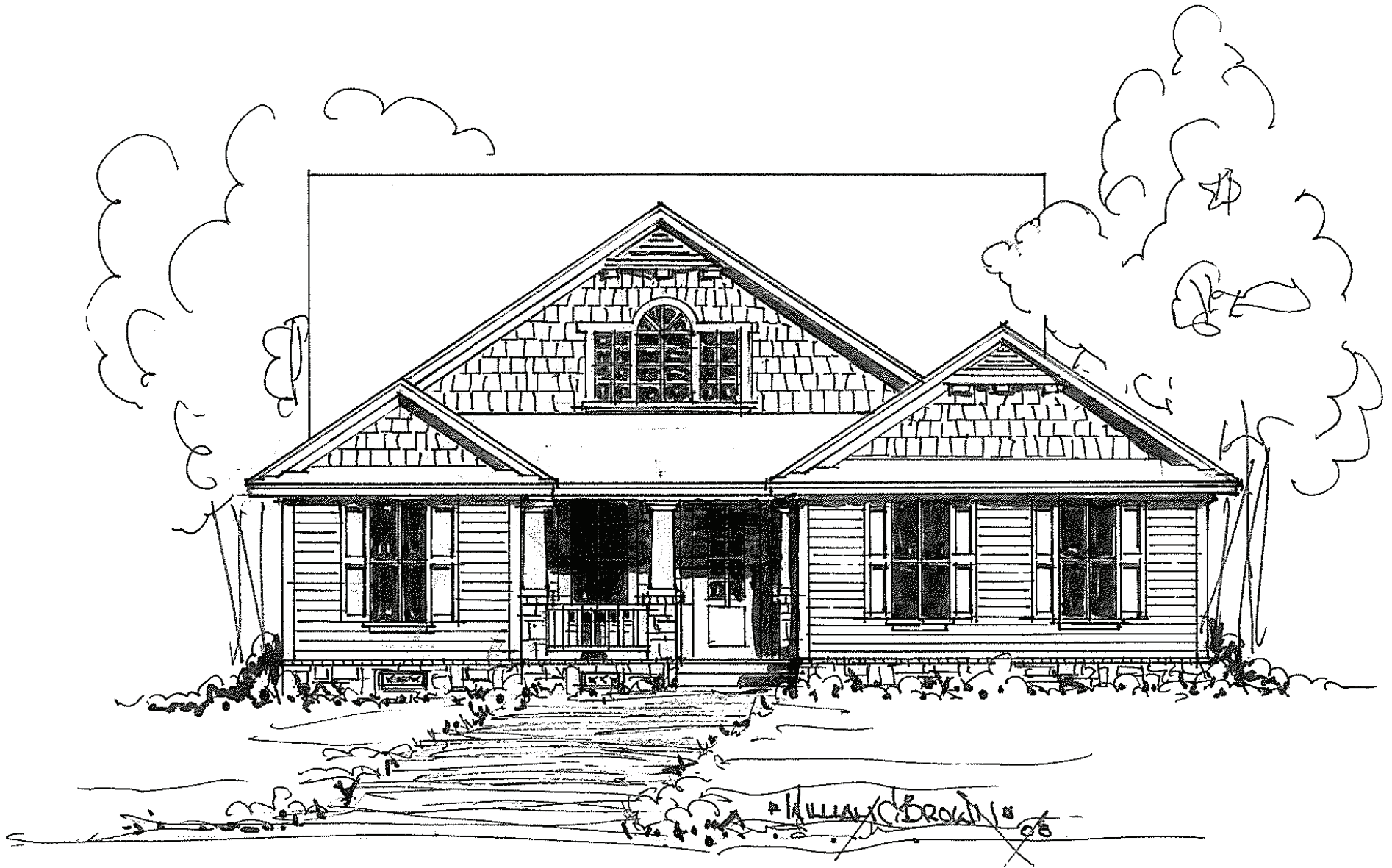


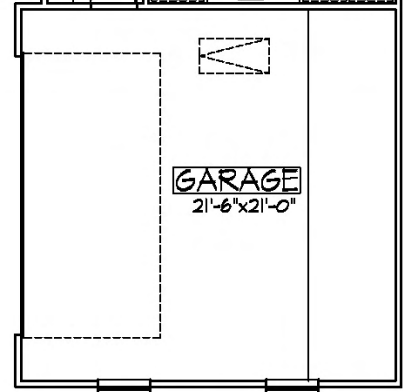
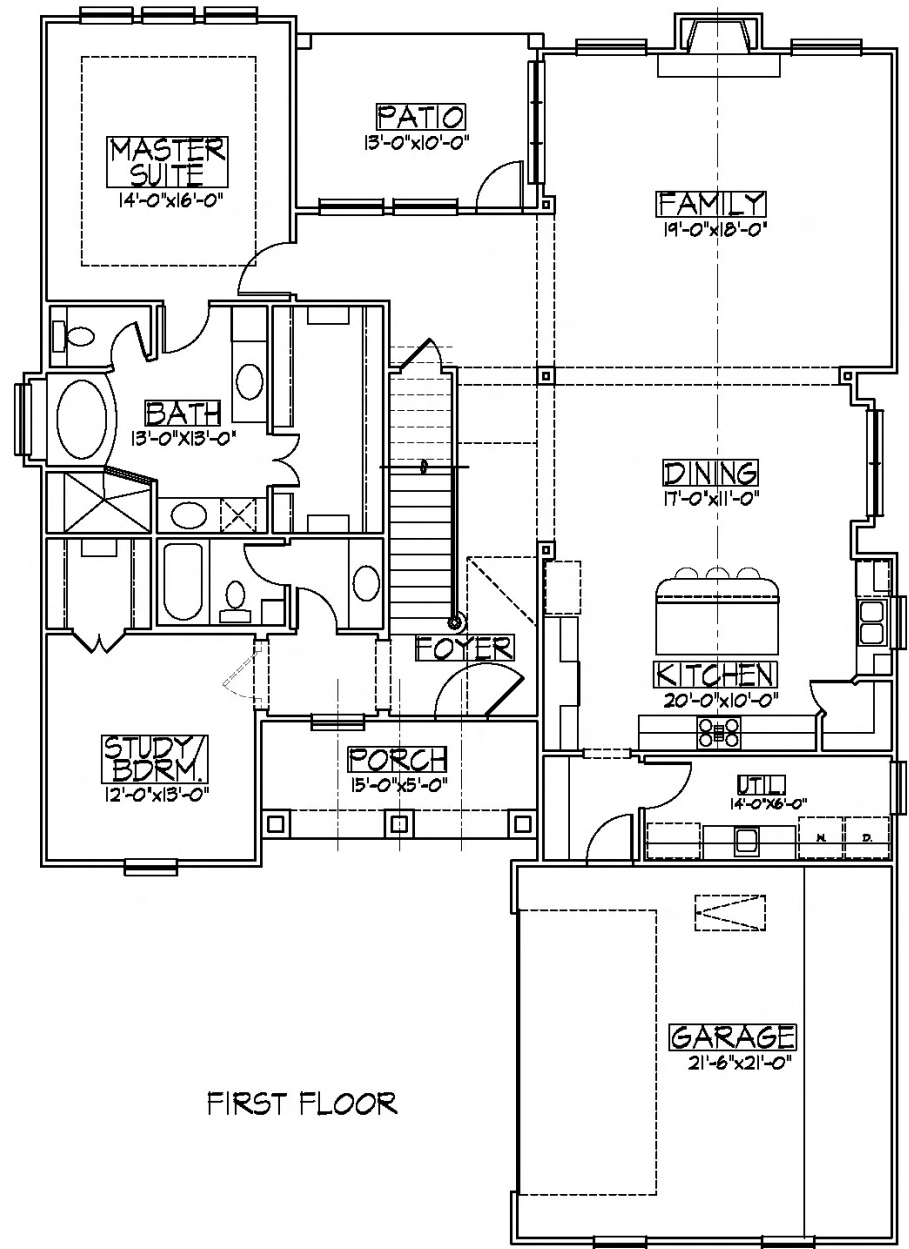
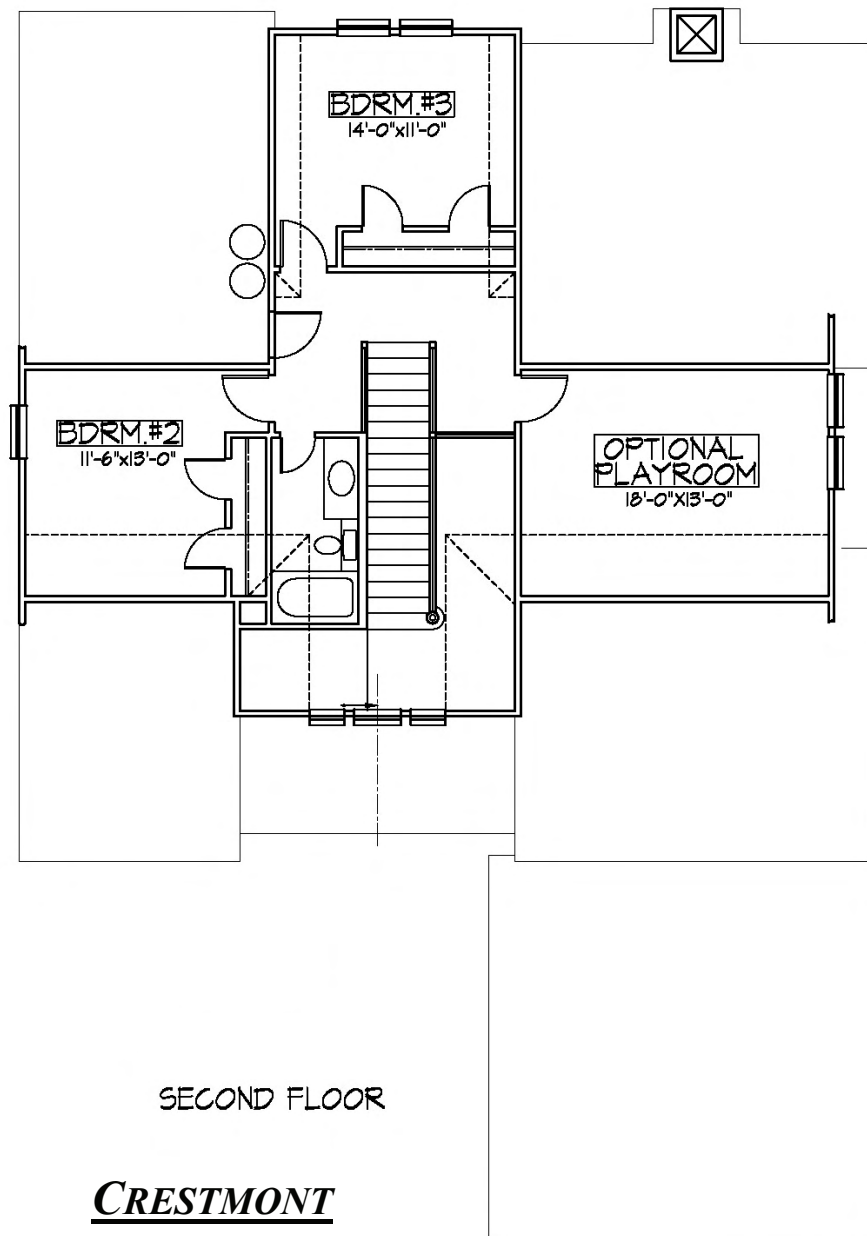


Crestmont



Crestmont

PRICES, SQUARE FOOTAGE, PLANS, FEATURES, AND AVAILABILITY MAY CHANGE WITHOUT NOTICE OR OBLIGATION. PHOTOS AND RENDERINGS ARE ARTISTS' DEPICTIONS ONLY AND ARE NOT NECESSARILY TO SCALE OR REPRESENTATIVE OF THE FINAL/FINISHED PRODUCT. NOBLE VILLAGE CLASSIC HOMES LLC 8-29-08

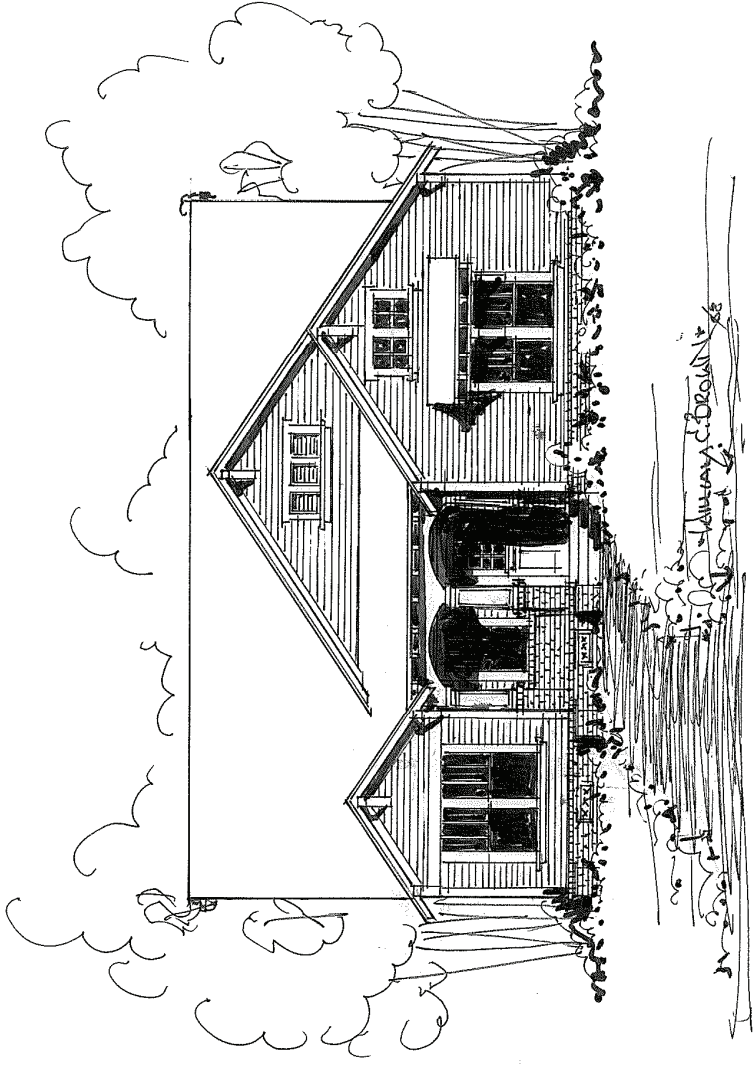


CRESTMONT

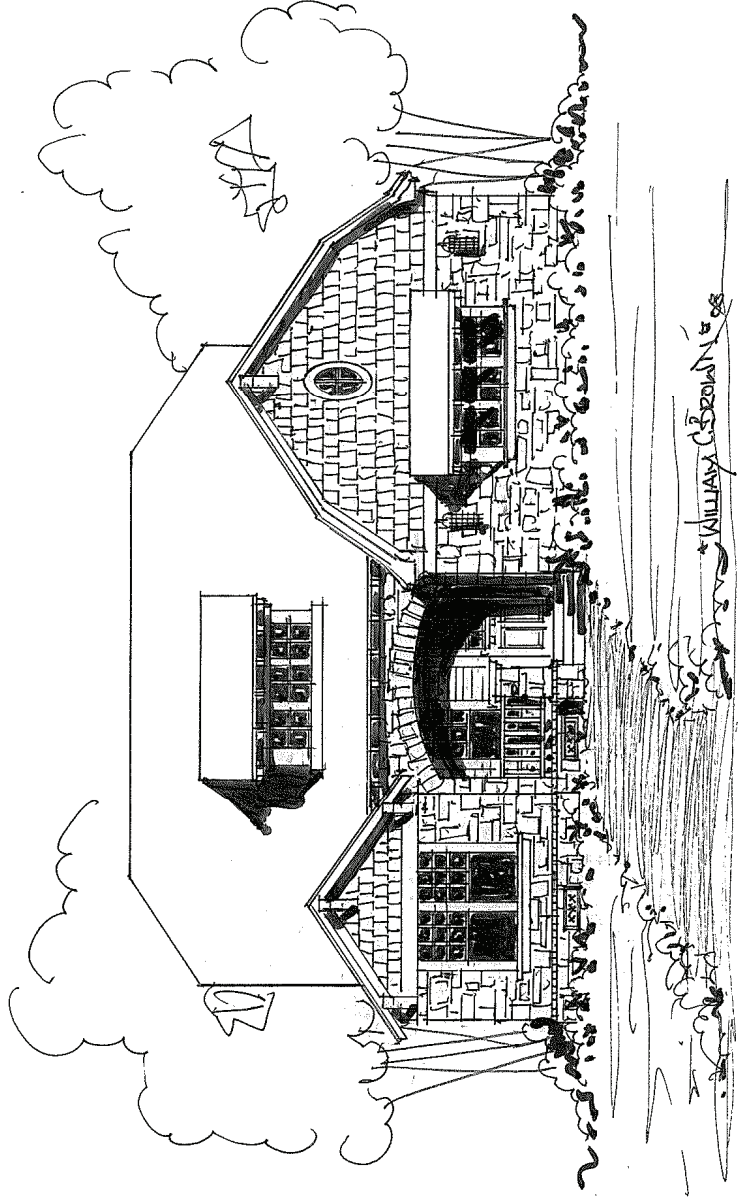
<i>1st Floor</i>	<i>2065 sq. ft.</i>
<i>2nd Floor</i>	<i>586 sq. ft.</i>
<i>Standard Living Area</i>	<i>2651 sq. ft.</i>
<i>(Optional Play Room)</i>	<i>249 sq. ft.</i>
<i>Total Living Area</i>	<i>2900 sq. ft.</i>

◦ *Noble Village Classic Homes* ◦

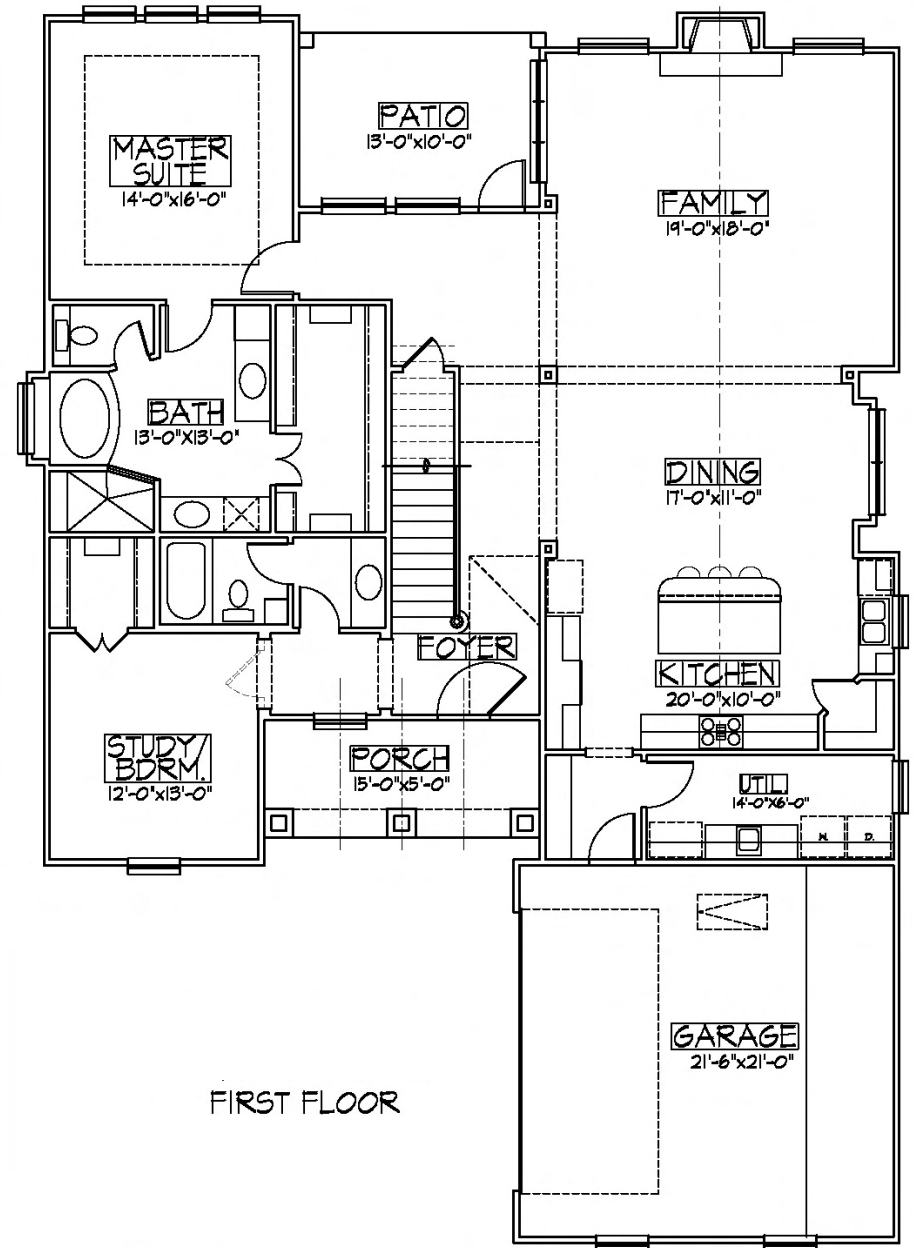
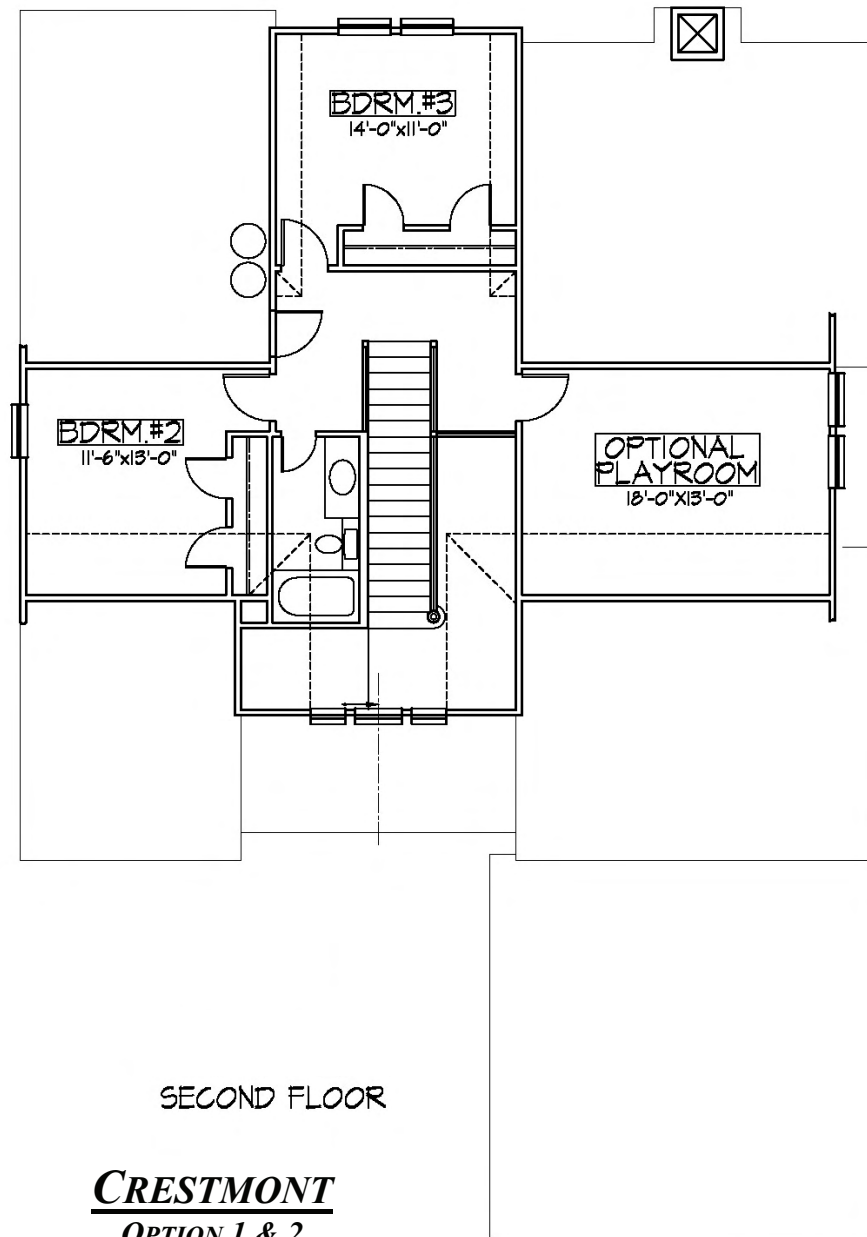
Quality Homes, Timeless Design



Crestmont (Option 1)



Crestmont (Option 2)



CRESTMONT
OPTION 1 & 2

<i>1st Floor</i>	<i>2065 sq. ft.</i>
<i>2nd Floor</i>	<i>586 sq. ft.</i>
<i>Standard Living Area</i>	<i>2651 sq. ft.</i>
<i>(Optional Play Room)</i>	<i>249 sq. ft.</i>
<i>Total Living Area</i>	<i>2900 sq. ft.</i>

◦ *Noble Village Classic Homes* ◦

Quality Homes, Timeless Design