

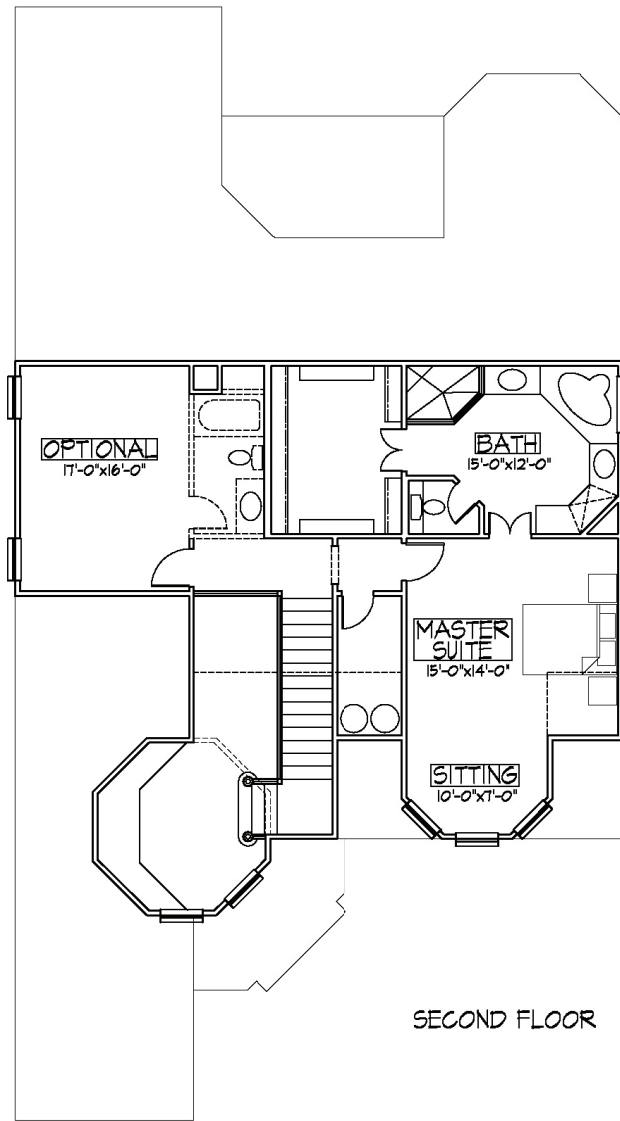


Rosewood

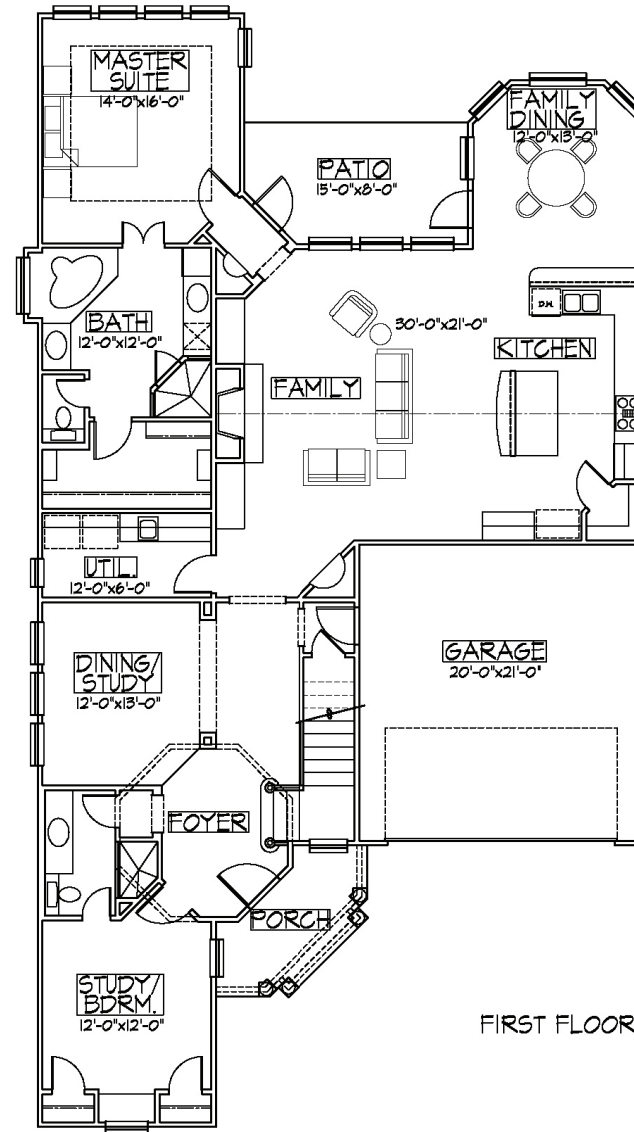


Rosewood

PRICES, SQUARE FOOTAGE, PLANS, FEATURES, AND AVAILABILITY MAY CHANGE WITHOUT NOTICE OR OBLIGATION. PHOTOS AND RENDERINGS ARE ARTISTS' DEPICTIONS ONLY AND ARE NOT NECESSARILY TO SCALE OR REPRESENTATIVE OF THE FINAL/FINISHED PRODUCT. NOBLE VILLAGE CLASSIC HOMES LLC 8-29-08



SECOND FLOOR



FIRST FLOOR

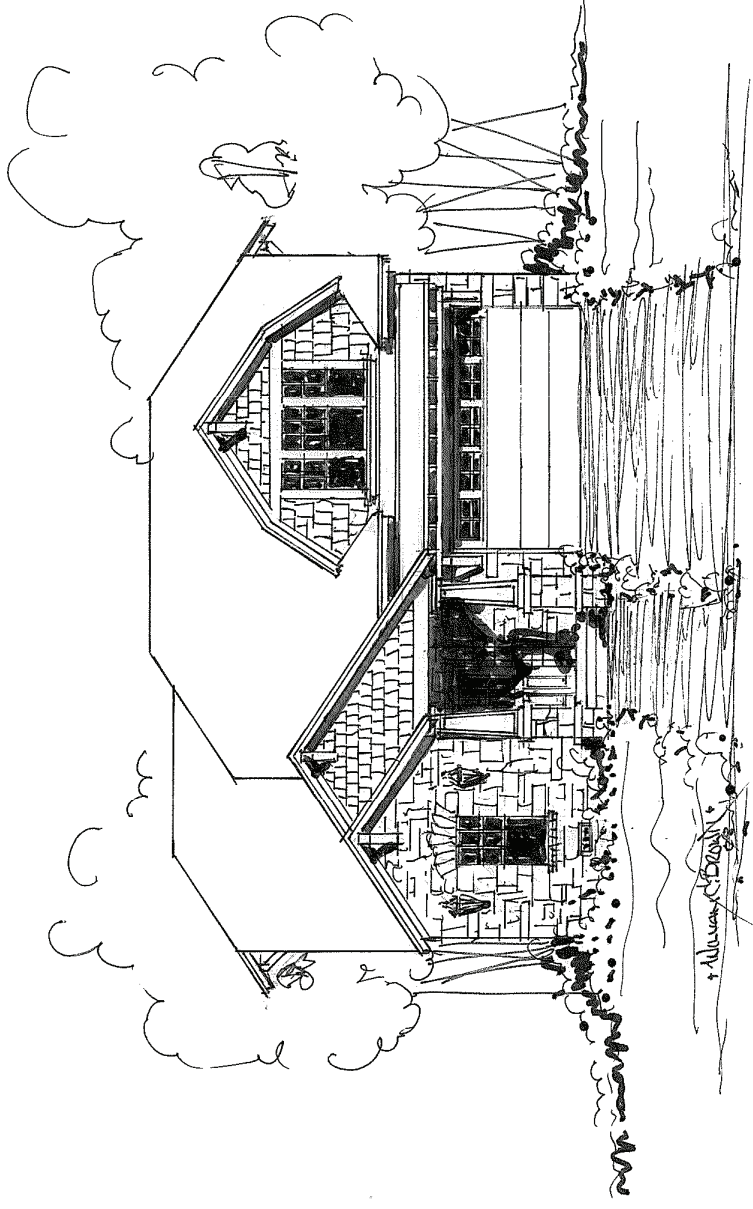
ROSEWOOD

1st Floor 2070 sq. ft.
2nd Floor 735 sq. ft.
Standard Living Area 2805 sq. ft.

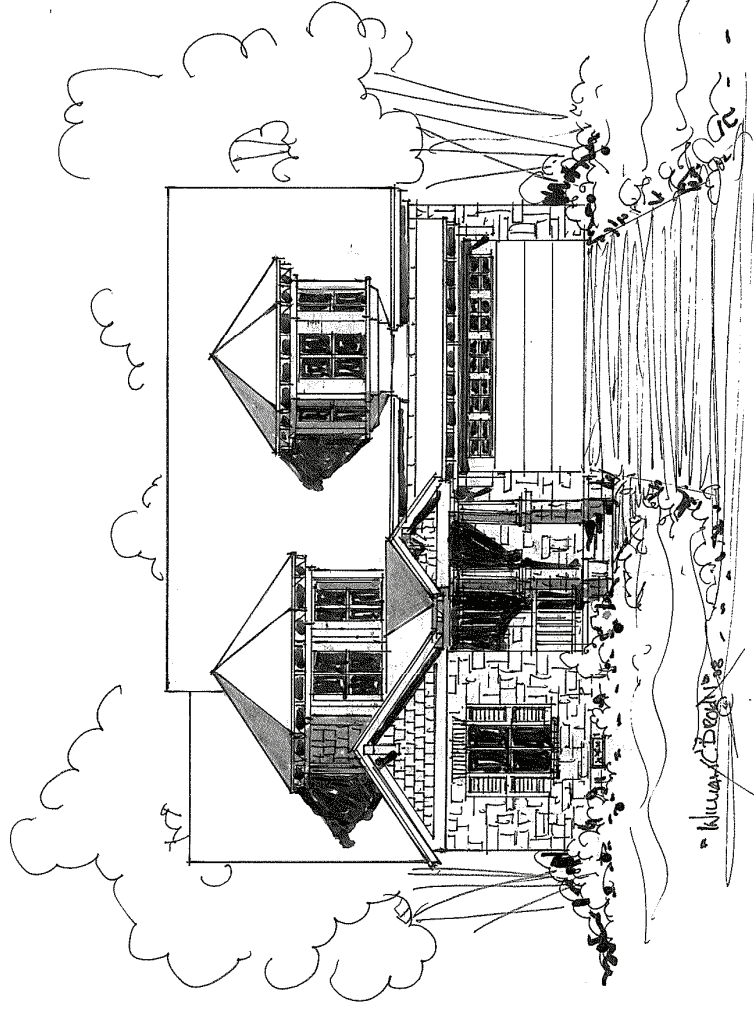
(Optional Flex Room & Bath) 271 sq. ft.
Total Living Area 3076 sq. ft.

◦ *Noble Village Classic Homes* ◦

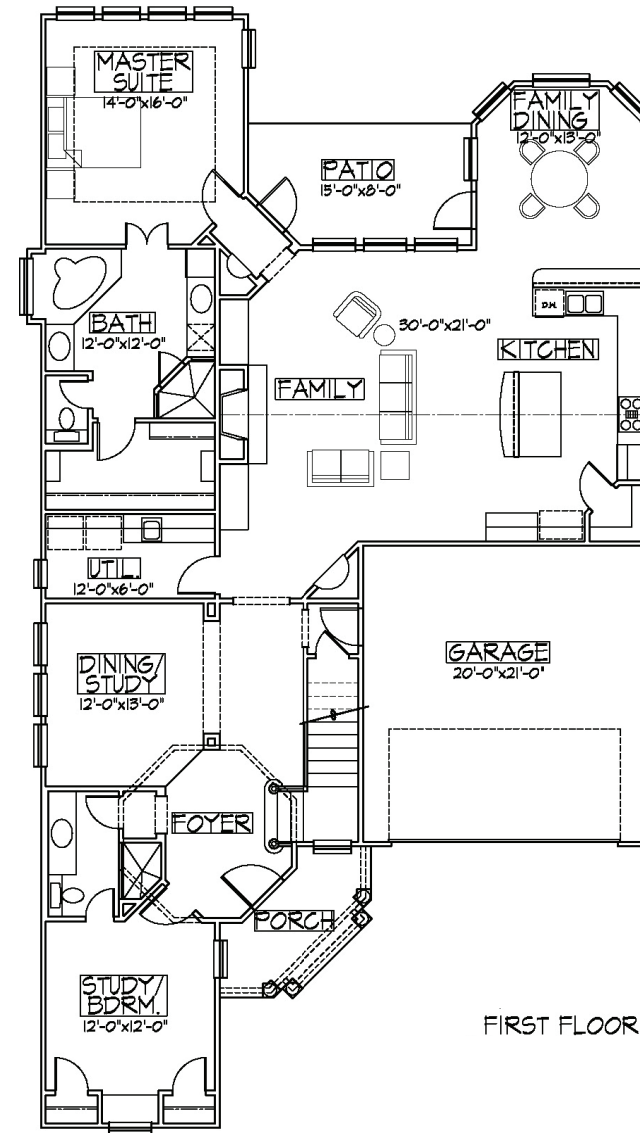
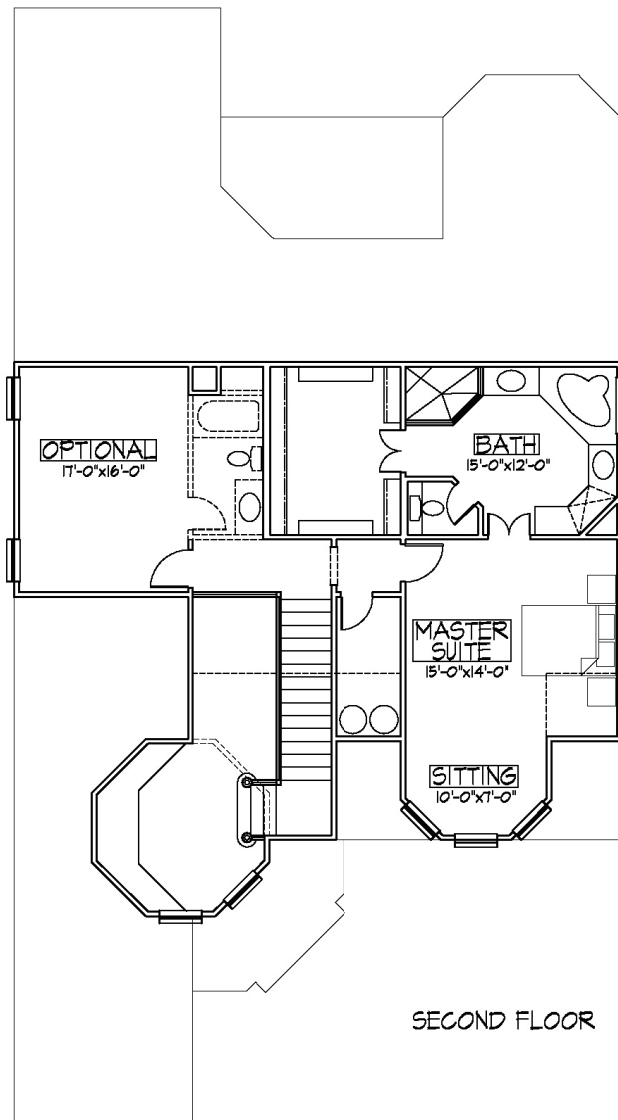
Quality Homes, Timeless Design



Rosewood (Option 1)



Rosewood (Option 2)



ROSEWOOD
OPTION 1 & 2

1st Floor 2070 sq. ft.
 2nd Floor 735 sq. ft.
 Standard Living Area 2805 sq. ft.
 (Optional Flex Room & Bath) 271 sq. ft.
 Total Living Area 3076 sq. ft.

• Noble Village Classic Homes •

Quality Homes, Timeless Design